

Michael and Karolena Begay's Solar Project



Bringing Solar to the Bus



Location,
Location,
Location.



Doing the Base Work



Ensuring a Solid Base



Panel Work, Welded Metal Pipes to the Solar Frame





Installing Panels to Frame





Up righting the Solar Panels

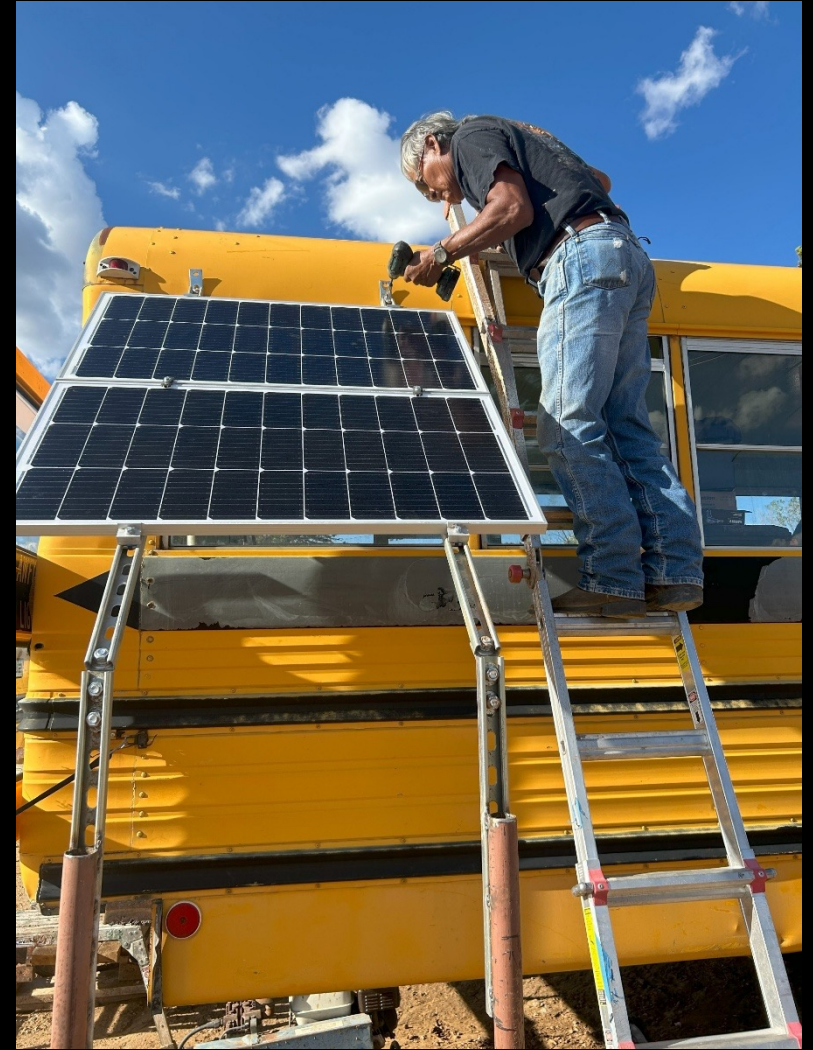




**Making
Sure the
Angles
are
Correct
for
Optimal
Sunlight**



Securing Panels to the Bus





Setting the Ground Probe





**Wired in
Parallel**

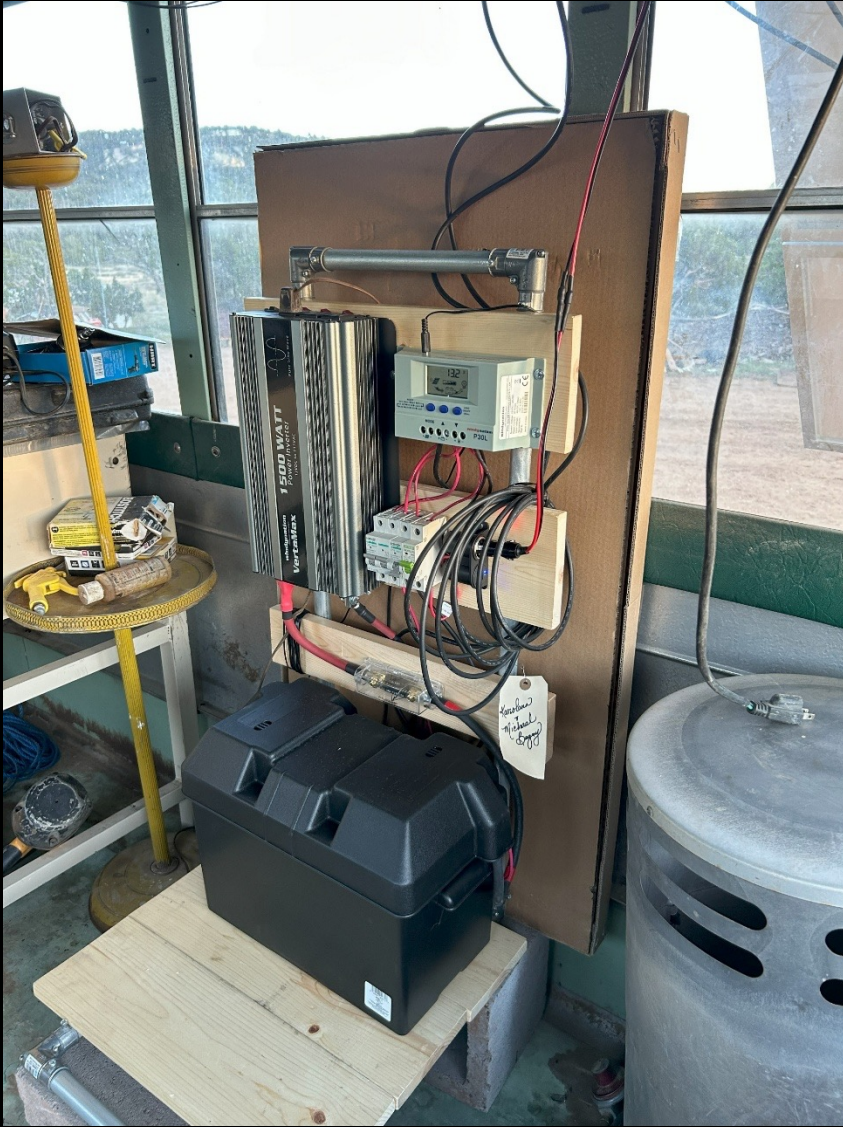




And Power!







Rest of Work Area in Bus



**Big Thanks to
Gallup Solar!**

